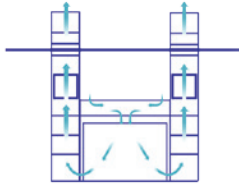


EZ Side Downdraft

- **Heavy Duty Bolted Construction**
- **Easy to Install and Operate**
- **Simple to Maintain**
- **Economical**
- **ETL Certification Available**



Col-Met's EZ product line was developed to provide fast availability and simple installation. A more economical solution for shops that are unable to install a pit, Col-Met's EZ Side Downdraft spray booths intake air from the cleaner upper levels of the shop through a filtered booth ceiling. The filtered air is drawn down and away from the product through exhaust filters at the floor level, along both sides. This provides efficient overspray control that reduces prep time and also provides a much healthier work place environment. EZ Side Downdraft booths can also be purchased with a pre-filtered plenum or with a pressurized intake plenum and can be equipped with an air replacement unit and cure cycle to meet your requirements.

The EZ Side Downdraft booths are offered in solid back or drive through configurations as well as pressurized and non-pressurized.

Booth Features

- >> **Heavy Duty Construction** Booths are constructed from 18-gauge, prime quality galvanized steel. All panels and support members are precision punched for easy nut and bolt assembly.
- >> **Superior Doors** Product Doors are field located on slotted hinges to facilitate adjustment on 2-axes for uneven floors. Our standard 30" wide man door, with built in observation window, is built into a pre-assembled heavy frame.
- >> **Industry-Leading Lighting** Lighted booths get bright, full booth illumination from four-tube, 48" long, 32-watt, fluorescent light fixtures. Col-Met light fixtures are ETL listed (Class 1 Division 2, Groups A, B, C, D and Class 2 Division 2, Groups F and G).
- >> **Efficient Fans & Motors** Quality brand-name tubeaxial fans and motors
- >> **Air Solenoid Valve** Interlocked to the exhaust fan and air supply for the spray application equipment.
- >> **Meets Quality Performance Standards** Spray booths manufactured by Col-Met meet and/or exceed all applicable OSHA and NFPA regulations.
- >> **ETL-Listed** With Purchase of Optional Control Panel

Booth Options

- >> LED lighting
- >> Air replacement units and intake chambers can be added
- >> Pre-filtered plenum for additional intake air filtration
- >> Durable powder coated white option available
- >> Roll-Up, Bifold or Trifold Doors
- >> 36" Man Access Doors
- >> Control panel and other electrical components can be purchased separately



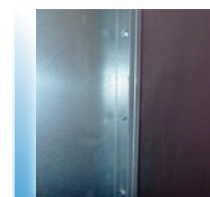
UL & ETL listed control panel



Industry-leading light levels



Windowed personnel access doors



5/16" bolts with serrated lock nut

Selecting a Booth Size

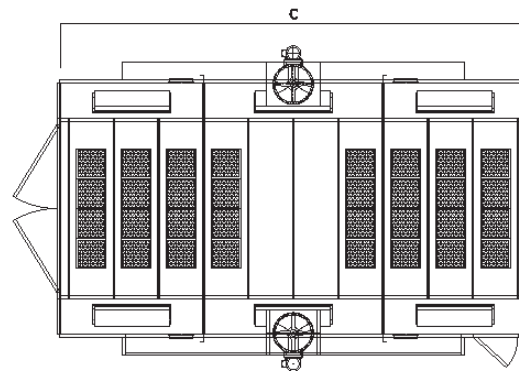
Col-Met can design and build spray booths in a variety of sizes and configurations. Although our team can engineer a custom booth to fit your needs, below are standard sizes that are quickly available to you.

Model Number	Interior Dimensions			Exterior Dimensions			Access Doors	Clear Door Opening				Qty. Lights	Air Flow SCFM	Fan Spec.		Filters	
	Width	Height	Length	Width	Height	Length		Width	Height	Qty	Type			Dia.	HP	Int.	Exh.
ESD-14-09-26-N-SB-S	14'-0"	9'-0"	26'-0"	16'-4"	10'-0"	26'-4"	1	9'-4"	8'-10.5"	1	Solid	10	12,740	(2) 24"	2HP	32	20
Reference Key	A	B	C	D	E	F		G	H								

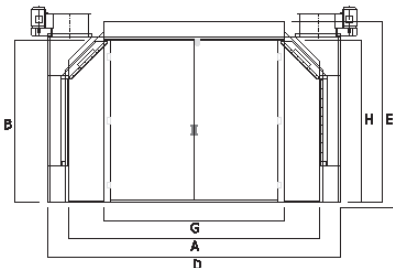
Alternative Configuration: Drive Through (DT)

Alternative Options: Pressurized (P) Pre-Filtered (PF)

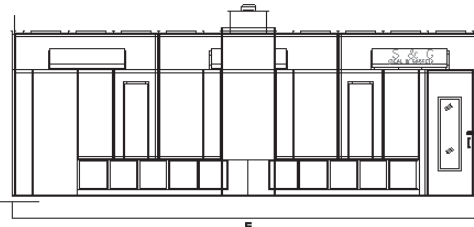
Standard length sizing is illustrated above



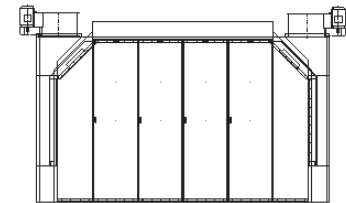
Plan view



End view from bay end



Booth side view



End view @ chamber