



automotive booths

EZ-26 CLASSIC CROSSDRAFT AUTOMOTIVE BOOTHS

- EZ TO INSTALL
- EZ TO OPERATE
- EZ TO MAINTAIN
- EZ TO QUICK SHIP

The Col-Met Classic Crossdraft Booth intakes fresh air through filters in the product doors. The clean filtered air is drawn through the booth and exhausted through a filter system at the opposite end. This type of spray booth makes efficient use of shop space and is available in solid back, drive through and reverse flow designs. Reverse flow booths intake air through filters in the back wall. The solid faced product access doors are at the exhaust end of the booth. This provides cleaner intake filtering and better control of shop dust that might be tracked in at the vehicle entrance.



LIGHTING FEATURES

Bright full booth illumination is provided by ten four-tube, 48", 32-watt, fluorescent light fixtures in the angled ceiling panels and side walls. Each is sealed behind clear, tempered safety glass. All fixtures are UL listed and approved for their intended use and placement. The light tubes are not furnished with the fixtures.

CONSTRUCTION FEATURES AND QUALITY STANDARDS

All booth and plenum sections are made with 18-gauge galvanized steel. All product and personnel access doors are pre-hung in heavy

gauge galvanized steel frames for easy installation. Brixon™ latches are provided for each door opening.

Exhaust is provided by a 30" diameter tubeaxial fan with a 3 HP, three-phase motor.

All hardware, filters and sealants needed for the booth installation are included. The control panel and other electrical components may be purchased separately.

Col-Met Spray Booth products comply with all OSHA and NFPA regulations.

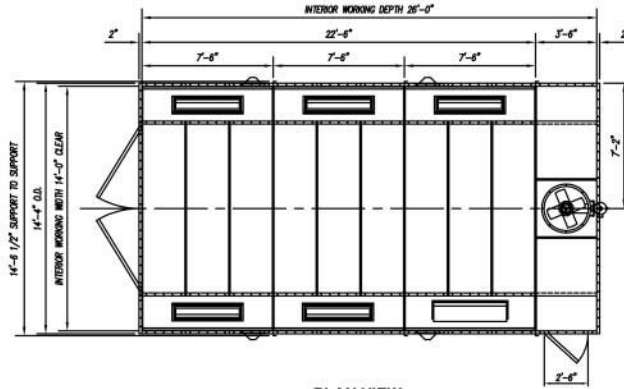
EZ-26 CLASSIC CROSSDRAFT AUTOMOTIVE BOOTHS

Model Number	Interior Dimensions			Exterior Dimensions			Access Doors	Nominal Door Opening				Lights Open	Air Flow SCFM	Fan Spec.		Filters	
	Width	Height	Length	Width	Height	Length		Width	Height	Qty	Type			Dia.	HP	Int.	Exh.
ECC-26SB	14'-0"	9'-0"	24'-6"	14'-6 1/2"	9'-2"	26'-4"	1	9'-4"	8'-10 1/2"	1	Filter	10	12,600	30"	3HP	20	16
ECC-26RF	14'-0"	9'-0"	24'-6"	14'-6 1/2"	9'-2"	26'-4"	1	9'-4"	8'-10 1/2"	1	Solid	10	12,600	30"	3HP	20	16
ECC-26DT	14'-0"	9'-0"	24'-6"	14'-6 1/2"	9'-2"	26'-4"	1	9'-4"	8'-10 1/2"	2	1 of ea.	10	12,600	30"	3HP	20	24

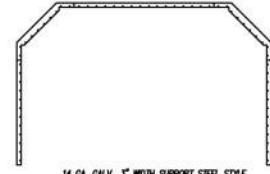
BOOTH CHART WITH DIMENSIONS AND DRAWINGS ON REVERSE SIDE

BOOTH CHART WITH DIMENSIONS AND SPECIFICATIONS

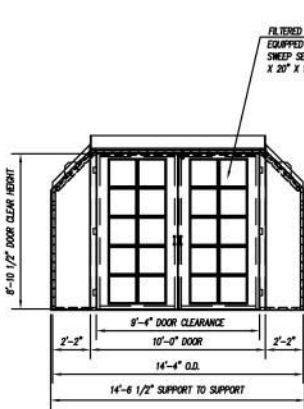
EZ-26 CLASSIC CROSSDRAFT AUTOMOTIVE BOOTHS



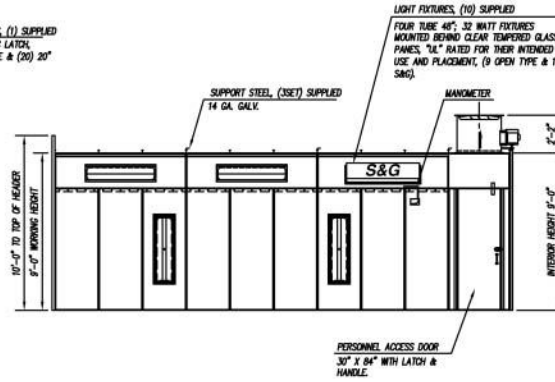
PLAN VIEW



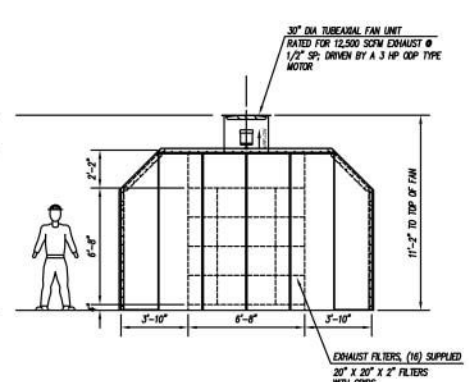
14 GA. GALV. 3" WIDTH SUPPORT STEEL STYLE



END VIEW FROM BAY END



BOOTH SIDE VIEW



END VIEW @ CHAMBER

02/06 CA

